



W  
WHITES

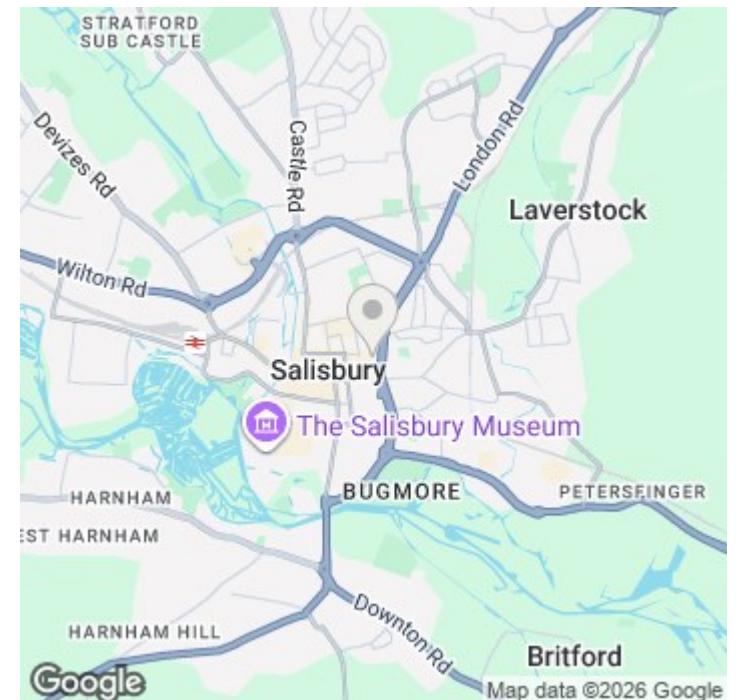
47 Winchester Street, Salisbury, Wilts, SP1 1HG

£1,100 PCM

## About The Property

Set within a Grade II listed building in the heart of Salisbury, this well-presented two-bedroom ground floor flat offers well-proportioned accommodation, just a short walk from Salisbury Guildhall Square. Recently redecorated and fitted with new carpets, the property retains its period features while offering a clean and updated interior.

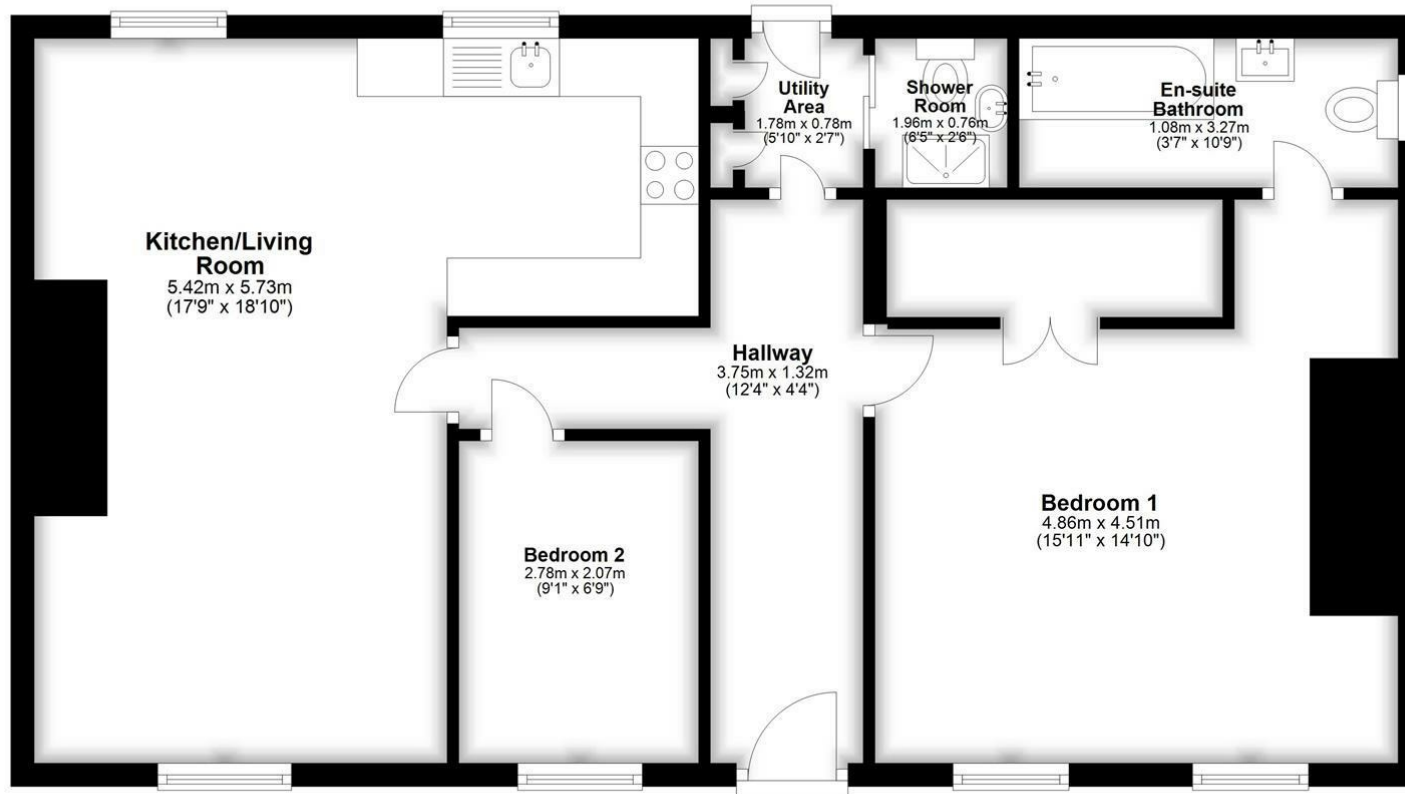
- Two double bedrooms
- Master with en-suite
- Open plan living/kitchen
- Feature fireplace
- Private patio area
- Allocated parking space
- Central Salisbury location
- EPC D
- Integrated fridge/freezer
- Ample internal storage





## Ground Floor

Approx. 69.0 sq. metres (742.3 sq. feet)



Total area: approx. 69.0 sq. metres (742.3 sq. feet)

## Further Information

Let available date: 8th June 2026  
 NB: This date is provisional and will only be confirmed once referencing has been successfully completed.

Property type: Flat

Furnish type: Unfurnished

Deposit: £1,265

Local authority: Wiltshire Council

Council Tax: Band B

EPC: D(63)

### Energy Efficiency Rating

	Current	Potential
Very energy efficient - lower running costs		
(92 plus) <b>A</b>		
(81-91) <b>B</b>		
(69-80) <b>C</b>		
(55-68) <b>D</b>	<b>63</b>	<b>75</b>
(39-54) <b>E</b>		
(21-38) <b>F</b>		
(1-20) <b>G</b>		
Not energy efficient - higher running costs		
<b>England &amp; Wales</b>	EU Directive 2002/91/EC	